

Project Electrical Inventory

Project Inventory Additional Inventory Takeoff Items Takeoff Document

Name	Manufacturer	Model	Type	Page Name	Circuit	Qty	Cost	Retail	Labor Qty	Le
15 Amp Duplex Receptacle			Duplex	Page 1	Planning Room Lights and Receptacles	1	\$0.89	\$1.00	0	
15 Amp Duplex Receptacle			Duplex	Page 1	Planning Room Lights and Receptacles	1	\$0.89	\$1.00	0	
15 Amp Duplex Receptacle			Duplex	Page 1	Planning Room Lights and Receptacles	1	\$0.89	\$1.00	0	
15 Amp Duplex Receptacle			Duplex	Page 1	Planning Room Lights and Receptacles	1	\$0.89	\$1.00	0	
15 Amp Duplex Receptacle			Duplex	Page 1	Planning Room Lights and Receptacles	1	\$0.89	\$1.00	0	
15 Amp Duplex Receptacle			Duplex	Page 1	Planning Room Lights and Receptacles	1	\$0.89	\$1.00	0	
15 Amp Duplex Receptacle			Duplex	Page 1	Planning Room Lights and Receptacles	1	\$0.89	\$1.00	0	
15 Amp Duplex Receptacle			Duplex	Page 1	Planning Room Lights and Receptacles	1	\$0.89	\$1.00	0	
Smoke Detector	First Alert	3120B	Interconnectable	Page 1	Planning Room Lights and Receptacles	1	\$29.97	\$33.57	0	

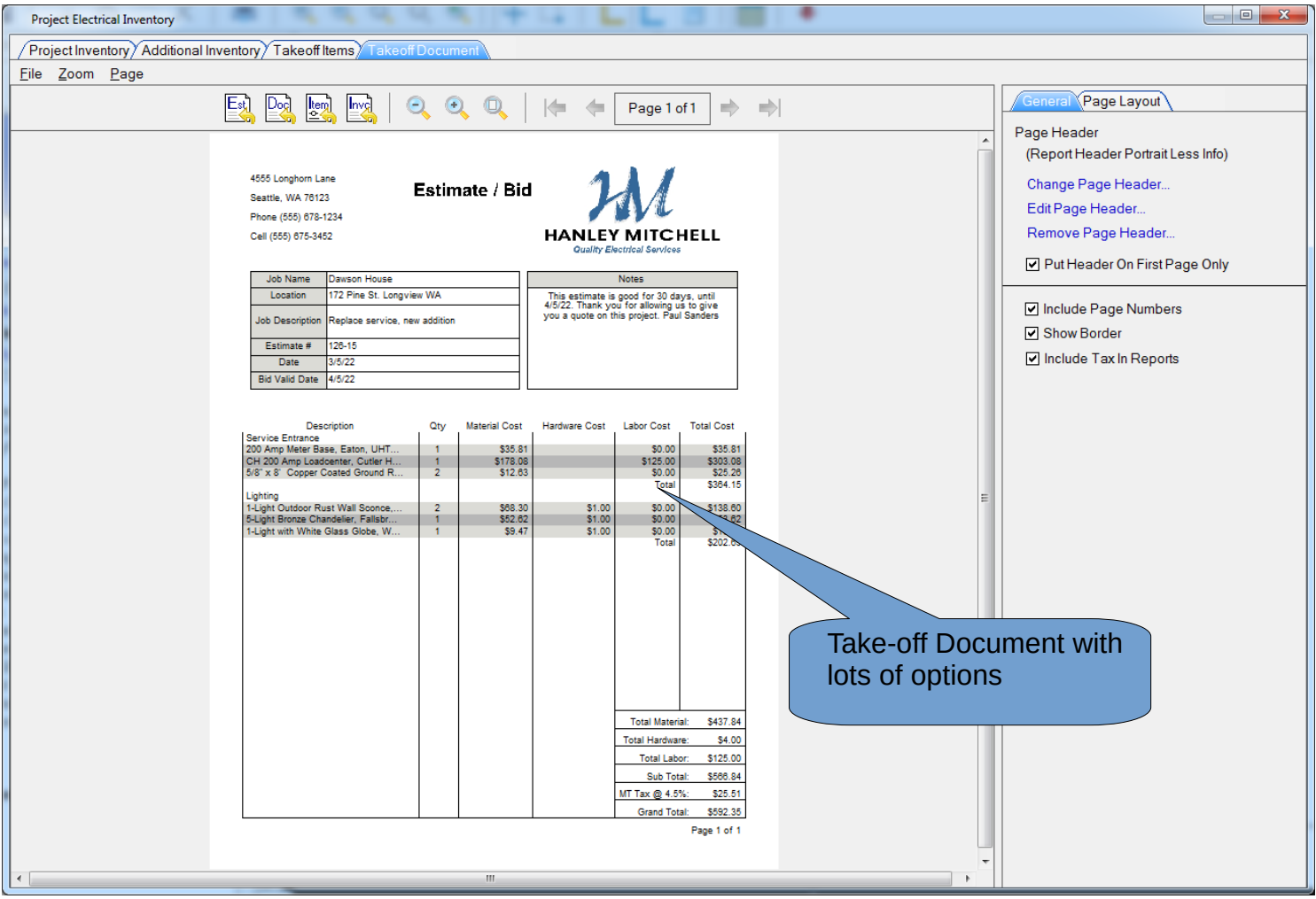
This tab shows items assigned to symbols in your diagram.

Project Electrical Inventory

Project Inventory Additional Inventory Takeoff Items Takeoff Document

Name	Manufacturer	Model	Type	Qty	Cost	Retail	Labor Qty	Labor Rate	Total Cost	Details
200 Amp Meter Base	Eaton	UHTRS202BCH	Single Phase 200 Amp	1	\$31.97	\$35.81	0	\$0.00	\$35.81	Volts = 600, Amps = 200, Watts = 0...
20 Amp Breaker	Cutler Hammer	CH120	Single slot	14	\$7.64	\$8.56	0	\$0.00	\$119.84	Poles = 1, Interrupting Capacity = 10...
50 Amp Breaker 2 Pole	Cutler Hammer	CH250	Double slot	1	\$0.00	\$16.40	0	\$0.00	\$16.40	Poles = 2, Interrupting Capacity = 10...
40 Amp Breaker 2 Pole	Cutler Hammer	CH240	Double slot	1	\$0.00	\$16.40	0	\$0.00	\$16.40	Poles = 2, Interrupting Capacity = 10...
30 Amp Breaker 2 Pole	Cutler Hammer	CH230	Double slot	1	\$0.00	\$32.80	0	\$0.00	\$32.80	Poles = 2, Interrupting Capacity = 10...
20 Amp AFI Breaker	Cutler Hammer	CH120AF	AFI	1	\$0.00	\$219.90	0	\$0.00	\$219.90	Poles = 1, Interrupting Capacity = 10...
20 Amp GFI Breaker	Cutler Hammer	CH120GF	GFI	1	\$0.00	\$102.30	0	\$0.00	\$102.30	Poles = 1, Interrupting Capacity = 10...
20 Amp Breaker 2 Pole	Cutler Hammer	CH220	Double slot	3	\$14.64	\$16.40	0	\$0.00	\$49.20	Poles = 2, Interrupting Capacity = 10...
12/2 w gnd 250'		NM-B		4	\$58.74	\$65.79	0	\$0.00	\$263.16	Rating = 600V, Size = 12 awg, Num...
12/3 w gnd 250'		NM-B		1	\$105.00	\$117.60	0	\$0.00	\$117.60	Rating = 600V, Size = 12 awg, Num...

This tab shows additional items in your diagram.



4555 Longhorn Lane
Seattle, WA 98123
Phone (555) 878-1234
Cell (555) 875-3452

Estimate / Bid



Job Name	Dawson House
Location	172 Pine St. Longview WA
Job Description	Replace service, new addition
Estimate #	128-15
Date	3/5/22
Bid Valid Date	4/5/22

Notes
This estimate is good for 30 days, until 4/5/22. Thank you for allowing us to give you a quote on this project. Paul Sanders

Description	Qty	Material Cost	Hardware Cost	Labor Cost	Total Cost
Service Entrance					
200 Amp Meter Base, Eaton, UHT...	1	\$35.81		\$0.00	\$35.81
CH 200 Amp Loadcenter, Cutler H...	1	\$178.08		\$125.00	\$303.08
6/6" x 6" Copper Coated Ground R...	2	\$12.83		\$0.00	\$25.66
				Total	\$364.15
Lighting					
1-Light Outdoor Rust Wall Sconce...	2	\$68.30	\$1.00	\$0.00	\$138.60
6-Light Bronze Chandelier, Fallsbr...	1	\$52.62	\$1.00	\$0.00	\$56.62
1-Light with White Glass Globe, W...	1	\$9.47	\$1.00	\$0.00	\$11.47
				Total	\$202.69
Total Material:		\$437.84			
Total Hardware:		\$4.00			
Total Labor:		\$125.00			
Sub Total:		\$566.84			
MT Tax @ 4.5%:		\$25.51			
Grand Total:		\$592.35			

Page Header
(Report Header Portrait Less Info)

- [Change Page Header...](#)
- [Edit Page Header...](#)
- [Remove Page Header...](#)

Put Header On First Page Only

- Include Page Numbers
- Show Border
- Include Tax In Reports

Take-off Document with lots of options